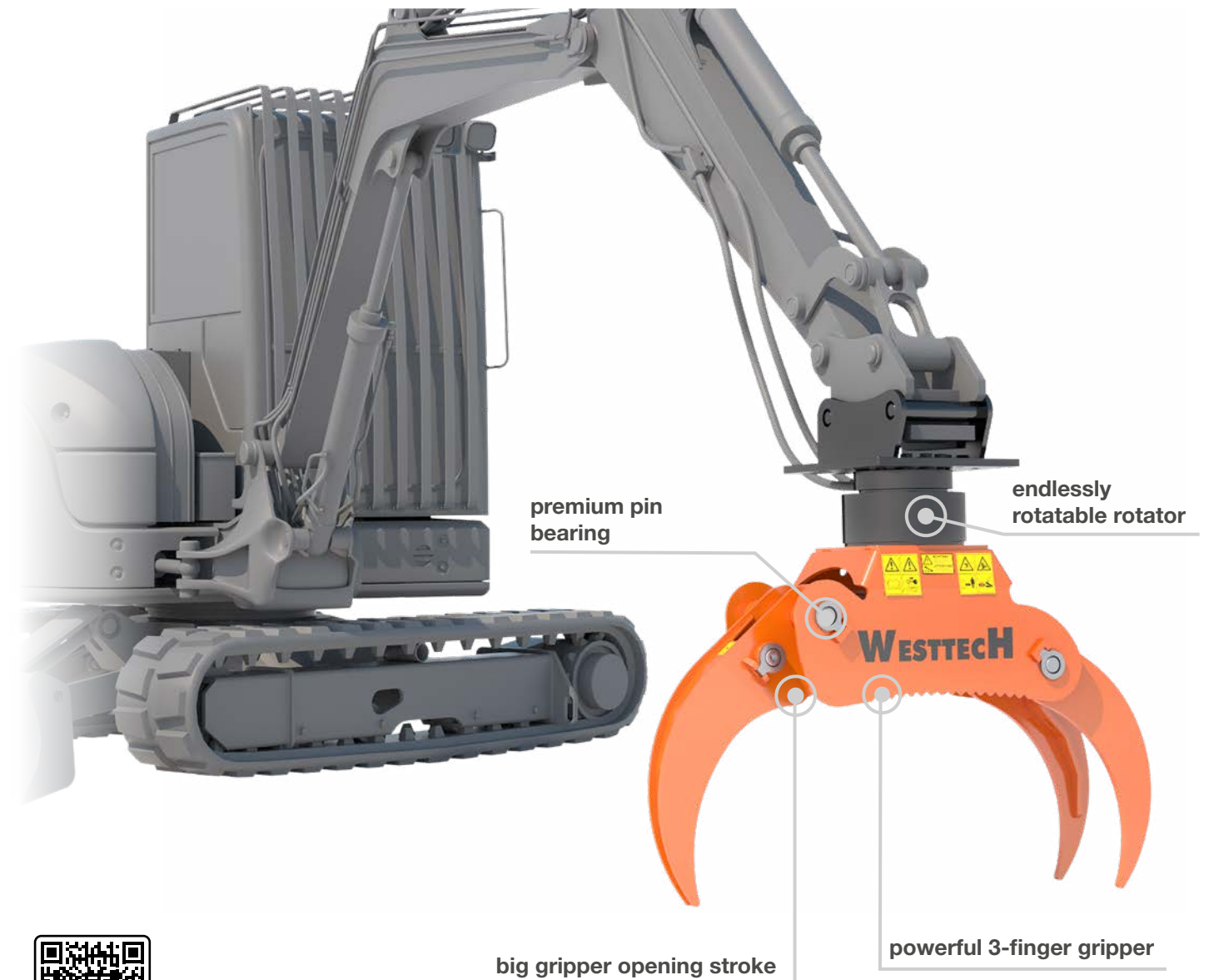


WOODGRIPPER



WOODGRIPPER



KEY FACTS

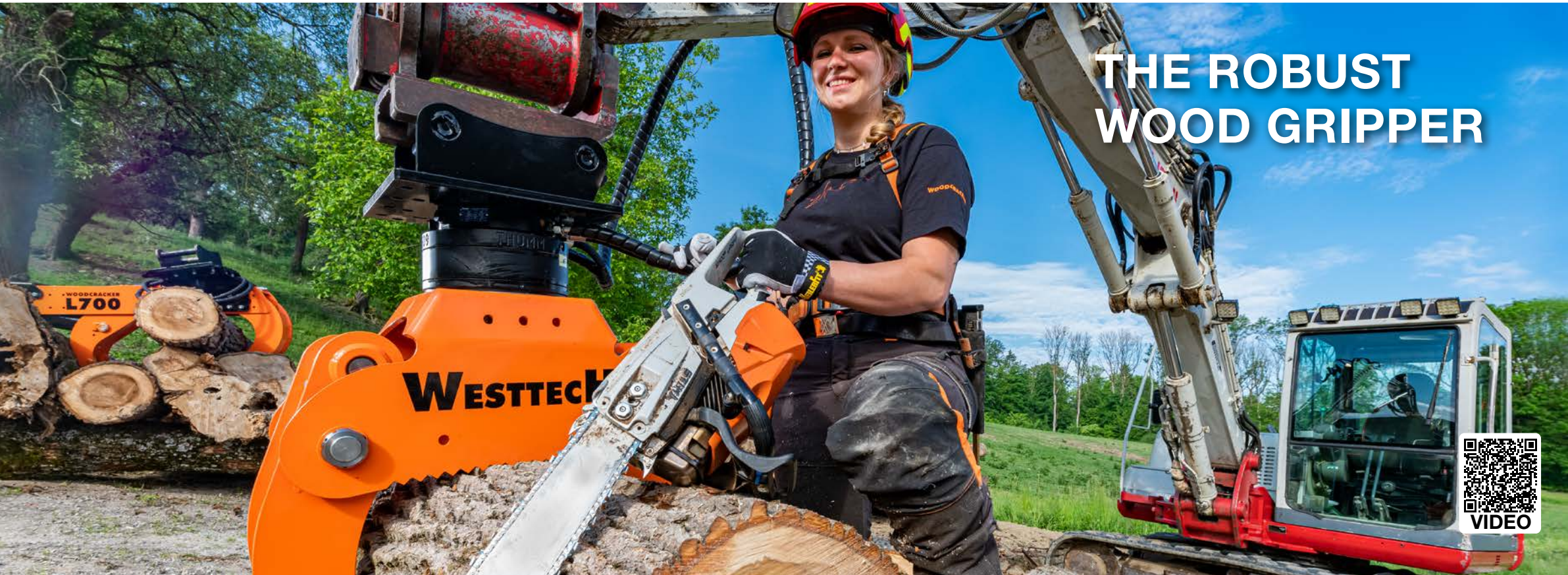
- Rigid or cardanic mounting possible.
- Can be mounted to cranes, timber trailers or excavators.
- Modular system with different options, eg. saw unit
- Robust and proven technology – Low-wear and low-service.
- KTL-primed (cathodic dip-coating) and powder coating. Made of high-strength Hardox® steel.

OPTIONS

- Quick coupler QC10
- Rotator
- Saw unit



Saw unit with 54 cm cutting diameter.



THE ROBUST WOOD GRIPPER



VIDEO



Gripper opening stroke 1270mm.



For rigid or cardanic mounting.

TECHNICAL DATA



Technical data and illustrations are not binding. Subject to changes for reasons of further development.

WOODGRIPPER	WG 1270	WG 1720
Gripper opening stroke (mm)	1270	1720
Deadweight (Base – Full equipment) (kg)	180 - 450	690 - 930
Recommended pump flow capacity ¹⁾ (l/min.)	30 - 80	60 - 190
Recommended operating pressure ¹⁾ (bar)	180 - 300	100 - 300
Service weight of carrier vehicle rigid ²⁾ (t)	3 - 10	15 - 28
Service weight of carrier vehicle cardanic ²⁾ (t)	3 - 15	15 - 60
Optional: Quick coupler QC10	•	-
Optional: Rotator (gimbal or rigid)	•	rigid
Optional: Saw unit	•	-
Optional: Walking foot with cardanic attachment	•	-

¹⁾ Depending on operating mode or equipment. ²⁾ Depending on specifications of the operation vehicle. • available - not available

APPLICATION AREAS

- Collecting/Loading/Manipulating.
- For tree trunks, branches or brushwood.
- Processing of already logged trees.



powerful 3-finger gripper



Sturdy and low-wear woodgripper with saw unit.



Can be mounted to cranes, timer trailers or excavators.